

# Winter Park / Fraser Rotary Club

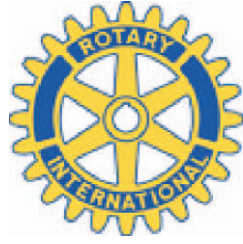
Winter Park / Fraser Valley Rotary Club meets Tuesdays at noon at Beaver Village Lodge 726-5741

## LODGING CHOICES TO FIT ANY BUDGET:

Hotel/Lodge rooms  
Standard 1-3 bedroom condominiums  
Luxury 3-4 bedroom town homes



Beaver Village Resort – est 1939  
A Winter Park Tradition  
79303 US Highway 40, Winter Park, CO  
800.666.0281 / 970.726.5741  
info@beavervillage.com  
www.beavervillage.com



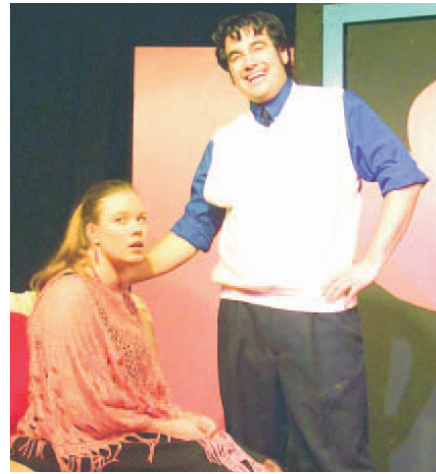
*Service above Self*

## Theater Night

On Thursday, 12/4 the WP/Fraser Rotary Club and the Grand Theater Company presents HA-HA, Holidays, as a benefit for the Rotary Shelterbox Program.

This production is filled with skits, monologues, and songs that will get you in the spirit of the holidays and have you laughing for a good cause.

Tickets are \$25. Doors open at 6:30 with a silent auction and cookie sale. The performance begins at 7:30. A cash bar and dessert will also be offered.



A Shelterbox is a large plastic box containing a weatherproof tent, bedding, water purification, cooking aides, utensils, a tool kit, a children's pack, etc. designed to support a family of 10 during times of natural disaster worldwide.

Two Shelterboxes costing \$1000 each were among the total of 2100 provided to Myanmar families during the cyclones of last year. Shelterbox was among the first disaster relief organizations allowed in Myanmar following the storms which killed nearly 100,000 people; and so Shelterbox has become a cornerstone of the WP/Fraser Rotary clubs international service. More information on Shelterbox can be found at [www.shelterbox.org](http://www.shelterbox.org)

Tickets for the theater night performance can be purchased in advance from Petra Recor. Call 627-5068 or e-mail [Petra@rkymtnhi.com](mailto:Petra@rkymtnhi.com).

Please Join us!

## Exchange Students

Rotary in Grand County is looking for families willing to open their homes to high school age exchange students for the 2009/2010 school year. If you're interested in hosting a student, please contact Judith Graham at 726-9543.

## Mountain Family Center

Mountain Family Center can use your help. Our Rotary Club is making a \$500 donation to the Mountain Family Center this holiday season, but given the state of the economy, especially here in Grand County, MFC will need all of the help they can get.

They are looking for people willing to sponsor families for the holidays. For more details on how you can make a personal contribution to the Mountain Family Center, give them a call at 725-3257.

## Vocational Service

One of 4 areas of Rotary service is Vocational. According to Rotary International; "Vocational service involves sharing your professional skills and ethical standards and so inspiring others in the process." As many Rotarians tend to be successful professional people, this ongoing series from local members will share those perceptions which have led to success.

## No Problems, Just Opportunities

by Andy Gold; Aircraft Technical Book Company, Tabernash

How to turn a bad situation into good begins by knowing that nothing in business is personal. If an issue exists for you, it probably exists for your competitors too. I've always seen these situations not as problems, but as a wake-up call. There is something we are not seeing; something we can do better; and if we can figure it out before the other guy, we'll have an advantage.

For example, as we are basically a mail order company, when the economy slows, so do we. We need to look further for our customers; to the 90% of the world to whom we were once unknown. But others have tried that and failed. The cost of shipping heavy books overseas is far to high to be competitive.

An advertising copywriter who has always inspired me once remarked that people who buy drills don't want drills, they want holes. In the same way people who buy books, don't want books, they want knowledge.

So, how can we provide knowledge without the heavy book? The eBook. Free shipping, no import taxes, instant delivery, priced in weak U.S. dollars, etc., etc. As the first in our industry to discover this, we had a head start to quietly begin putting together the needed systems, partnerships, and permissions.

Today, our competitors who were slow in understanding their problems now distribute eBooks through us and we enjoy a sort of monopoly in our industry.

So get out of your box. Be the mouse that roared. Re-write the rules of your industry and in doing so, turn your business problems into opportunities.

## December Events

12/4 Theater Night and Benefit Silent Auction; Grand Theater; 6:30 pm

### WP/Fraser Rotary Club Speakers

12/2 David Cook, Atty; estate planning

12/9 Mark Krieg; new Rotary Assistant District Governor

12/16 Dale Sonnet & Andy Fischbach High Country Stampede Rodeo

12/23 Club Assembly Meeting

12/30 to be announced

WP/Fraser Club meets Tuesdays at noon at Beaver's Lodge

Granby Club meets Wednesdays at noon at the Silver Creek Inn

Grand Lake Club meets Tuesday 7:00 pm at the Bear Paw Restaurant

Kremmling 2nd/4th Tues. - 7:00am at Middle School Cathy Shipley Room

For more information about the Winter Park Fraser Valley Rotary Club join us at a weekly meeting or see our web site at: [www.wpvf-rotary.org](http://www.wpvf-rotary.org)

*This space funded by the surrounding local Rotary Club members. Please help them help our community*



## FINANCIAL, TAX, AND WEALTH MANAGEMENT

POPE & ASSOCIATES, LLC  
COOPER CREEK SQUARE  
78960 U.S. HIGHWAY 40  
SUITE 317  
P.O. BOX 189  
WINTER PARK, CO 80482  
970-726-8044



## J. GRAHAM MORTGAGE

Residential Mortgage for  
Primary & Vacation Homes  
Land or Lot Loans  
Commercial & Construction Loans

.....  
COMPETITIVE RATES  
FREE CONSULTATIONS  
Pre-qualify by phone or email  
[www.jagra@rkymtnhi.com](mailto:www.jagra@rkymtnhi.com)

970-726-9543  
970-726-4450 - Fax  
970-531-0429 - Cell

2008 Grand County  
Parade of Homes  
People's Choice Winner  
4 Years Running!



Long Term Relationships - Based on Trust.

[www.TerraFirmaCustomHomes.com](http://www.TerraFirmaCustomHomes.com)  
(970) 726.1133

## Gallery IV

FINE ART  
FLORAL ARRANGEMENTS  
PHOTOGRAPHY &  
EXTRAORDINARY  
TREASURES

78727 Hwy. 40  
Winter Park  
970-726-4088

## GRAND MOUNTAIN BANK<sup>SM</sup>

Your Hometown Bank in Grand County

Fraser  
726.0414

Granby  
887.1221

Grand Lake  
627.9500

FREE ONLINE BANKING  
[www.grandmountainbank.com](http://www.grandmountainbank.com)  
Large Enough to be of Service  
Small Enough to Care.

## Gasthaus Eichler



78786 Hwy. 40 Downtown  
Winter Park  
(970) 726-5133

Brighten Up Your Kitchen or Bath . . .  
Create New Traffic Patterns . . .  
Update Your Mountain Environment . . .  
Create a Feeling of Spaciousness . . .  
Enhance Rental Value . . .

at  
your  
Service  
Remodeling

970-726-8935 • PO Box 2832 Winter Park, CO  
COMPLETE KITCHEN AND BATHROOM REMODELING

- Layout and Design
  - Cabinets and Countertops
  - Flooring - Tile, Wood & Carpet
  - Fixtures and Appliances
- Quality Craftsmanship Guaranteed  
Fully Licensed and Insured

References Available

"We will provide guaranteed top-quality craftsmanship with your chosen materials and components for complete kitchen and bath remodels from design conception through final inspection to reinforce your investment in your mountain home." - Tom Goulette, President